





Secure provider portal


Manage patient administrative tasks quickly and easily

 **Visibility of multiple TINs**
One point of entry allows for quick and easy access to Ascension Complete member information for multiple TINs/practices.

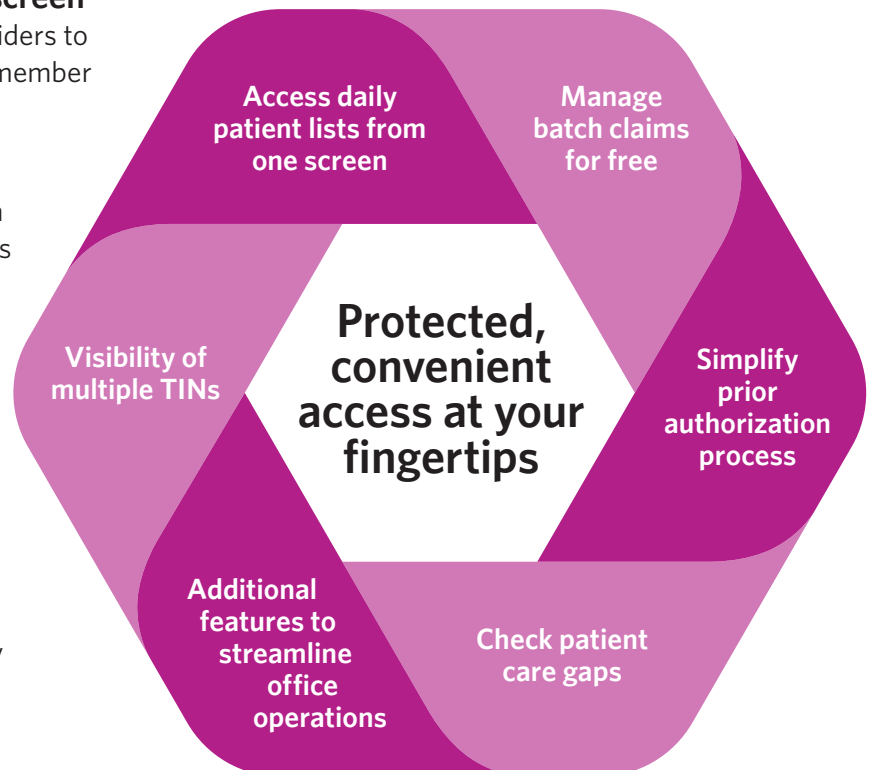
 **Access daily patient lists from one screen**
One concise view allows primary care providers to scan patient lists for Ascension Complete member eligibility, care gaps and much more.

 **Manage batch claims for free**
Submit and manage claims, including batch files, for free. View detailed electronic funds transfer (EFT) payment history.

 **Simplify prior authorization process**
"Smart Sheets" feature prompts for required clinical information when submitting prior authorization requests.

 **Additional features to streamline office operations:**

- View patient demographics and history
- Secure messaging between provider and Ascension Complete
- Update provider demographics



Get started now!

Visit www.ascensioncomplete.com > For Providers. Have your tax ID number ready during signup.

Questions?

www.ascensioncomplete.com > Contact Us